

JAPAN ELECTRIC LAMP MANUFACTURERS ASSOCIATION



HISTORICAL BACKGROUND

The Japan Electric Lamp Manufacturers Association(JELMA) was established on November 1933, as a private voluntary organization, and restructured into its present form as an incorporated body on March 1957.

MISSION

JELMA's goal is to contribute to the development of industries through the healthy development of the electric lamp industry and its relating industries, where the electric lamps include incandescent lamps, discharge lamps, ballasts, and electronic transformers. Its activities include a broad range such as a) investigations, b) improvement of the quality, performance and safety, and c) standardization, of the electric lamps.

By these means, JELMA hopes contributing to secure the safety of the people's life and to upgrade the life and culture.

PRODUCTS



Incandescent & Tungsten Halogen Lamps



Fluorescent Lamps



HID Lamps



Lamp Parts & Relating Materials



Ballast



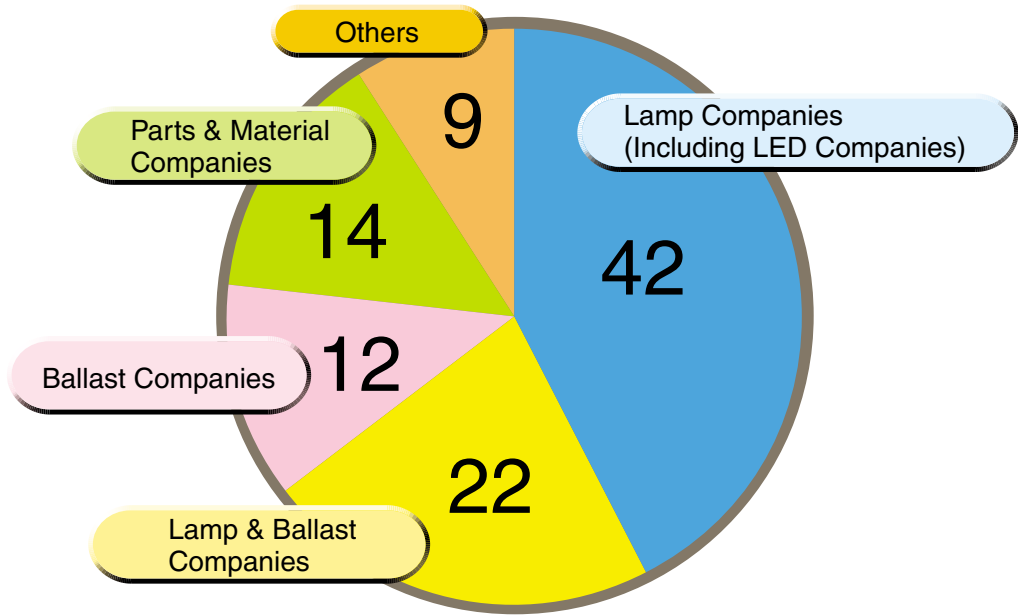
Automotive Lamps



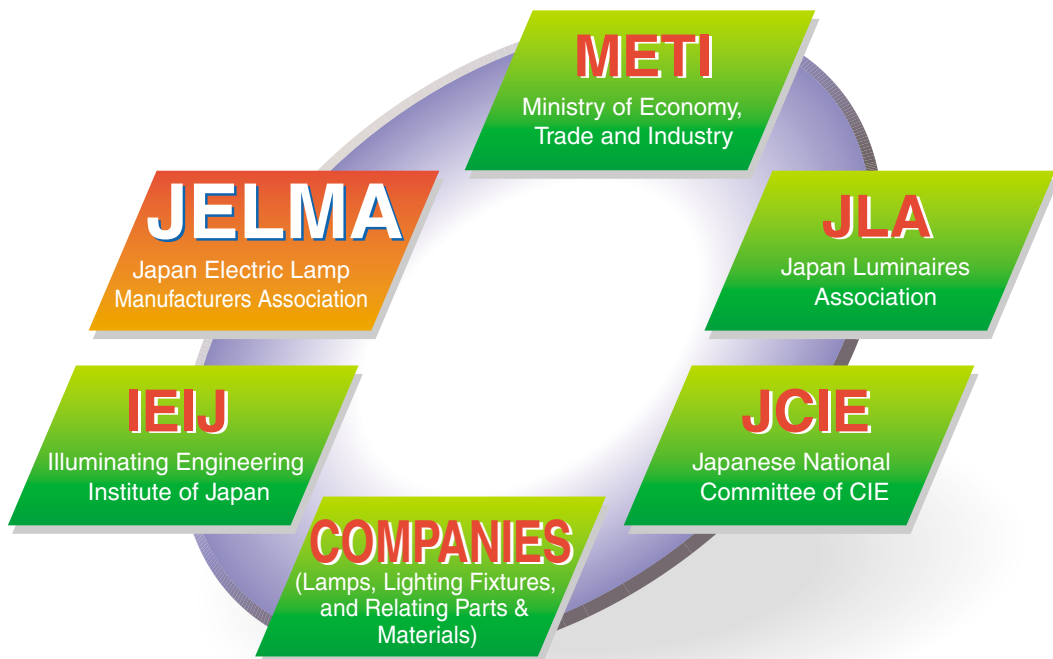
LED Lamps

JELMA MEMBERS(2009)

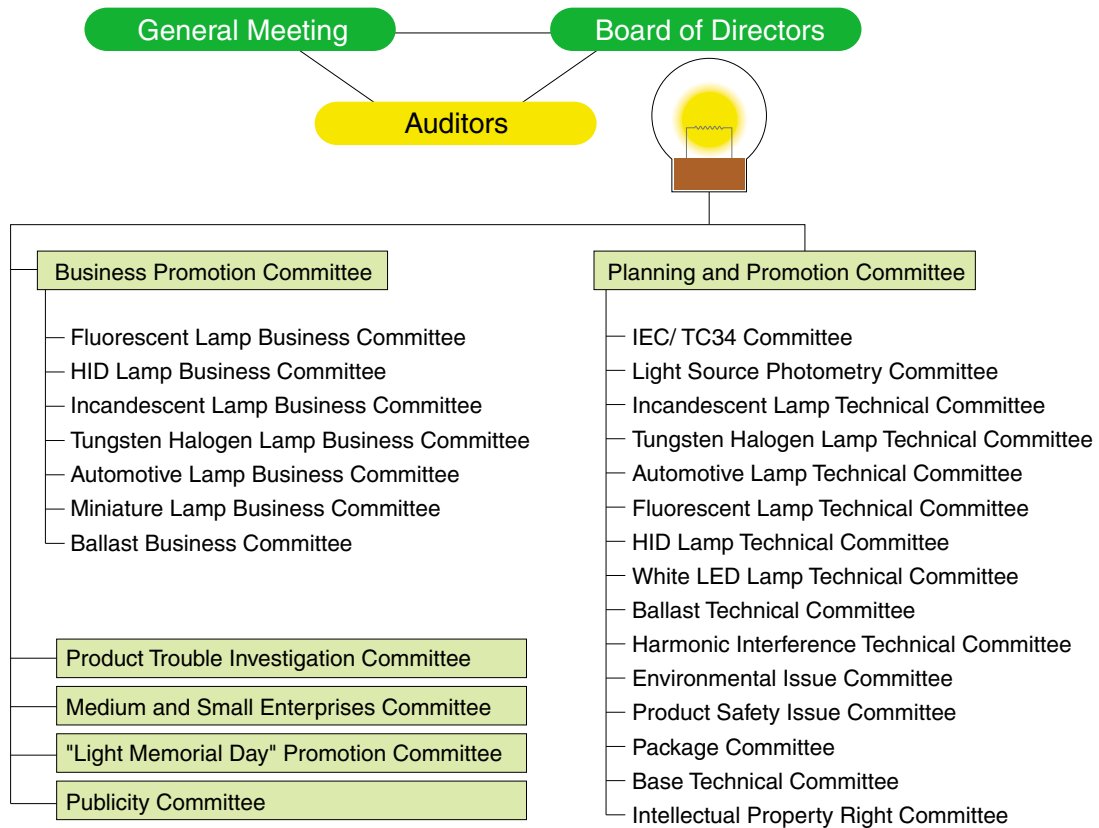
Members: 101 (99 Companies + 2 Organizations)



JELMA AND RELATING ORGANIZATIONS



JELMA ORGANIZATION

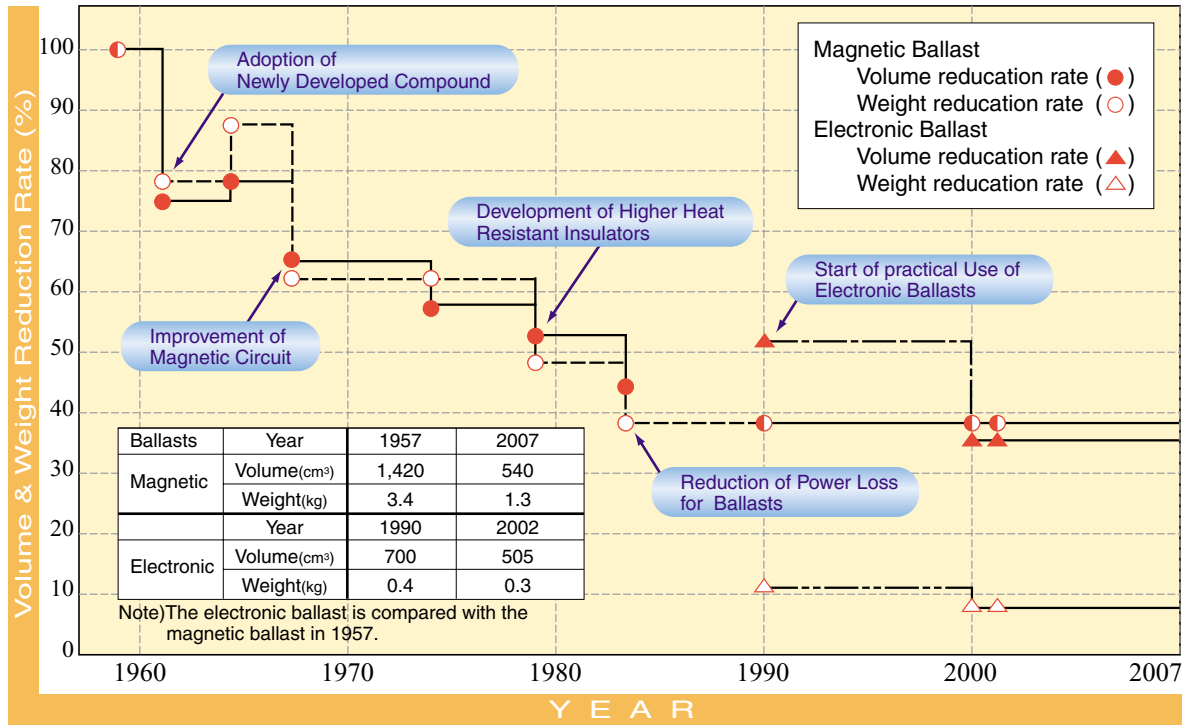


INTERNATIONAL ACTIVITIES

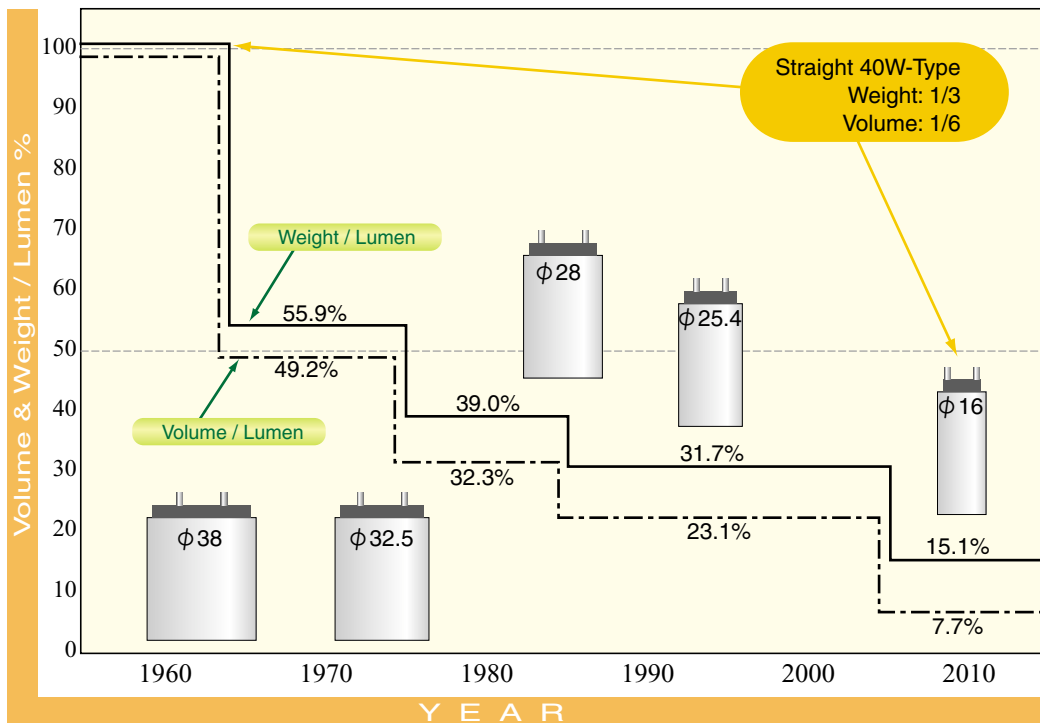
Contribution to Globalization of Illumination

- Japanese Industrial Standard (JIS) harmonization with International Standard (IEC)
- Cooperation to harmonize technical requirements of the Electrical Appliance and Material Safety Law with International Safety Standards
- Participation in establishment, revision & abolition of International Standard (IEC)
 - TC34[Lamps and related equipments]
 - SC34A [Lamps]
 - SC34B [Lamp caps and holders]
 - SC34C [Auxiliaries for lamps]
 - TC77 [Electromagnetic compatibility]
 - SC77A [Low frequency phenomena]
- Participation and proposal to Brussels Working Group (GTB)
 - Cooperation with Overseas relevant Body
 - Society of Automotive Engineers (SAE)
 - Economic Council of Europe (ECE) Regulation
- Promotion of investigation & study for International Standardization of Lighting Technology
- Cooperation with Foreign Lamp-Industry-Associations for the future of lamp industry.

DECREASE OF VOLUME & WEIGHT FOR BALLASTS (Rapid Start 40W - 2 Lamp Type)



LAMP VOLUME & WEIGHT / LAMP LUMEN

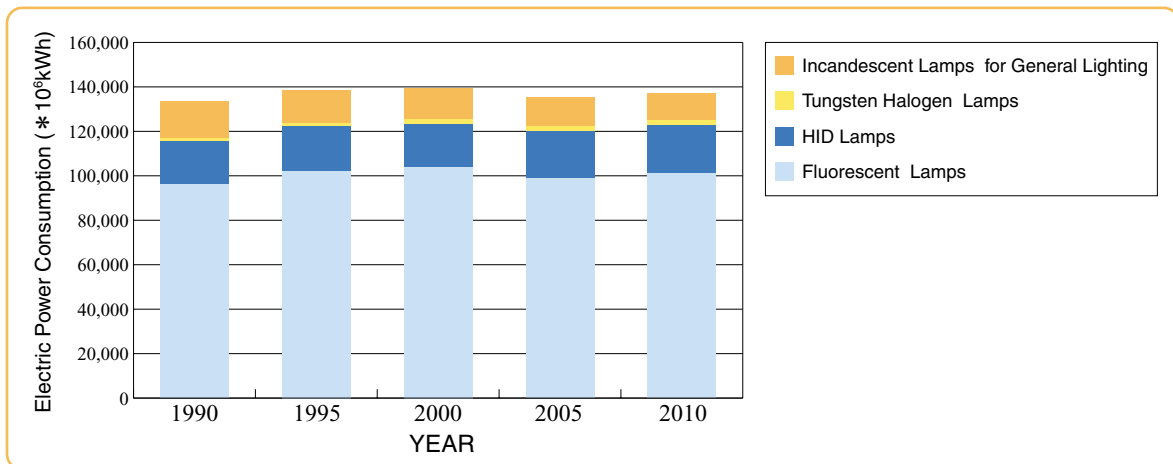


PUBLICATIONS

1. JELMA JOURNAL: 8 times/year (In Japanese)
2. JELMA STANDARD (JEL) (LATEST ISSUE. In Japanese)

JEL No	TITLE	DATE of ISSUE
JEL 211	High frequency fluorescent lamps (for general lighting services)	2004-3 revised
JEL 305	Measurement of mercury level in fluorescent lamps for LCD back lights	2006-10 published
JEL 505	High frequency - reference power circuit for fluorescent lamps	2006-7 revised
JEL 600	Proper usage and indication items for lamp products	2007-2 revised
JEL 601	Rule of safety verification test method for lamp products	2008-12 revised
JEL 701	Regulation concerning handling of industrial property rights on standardization	2007-12 revised

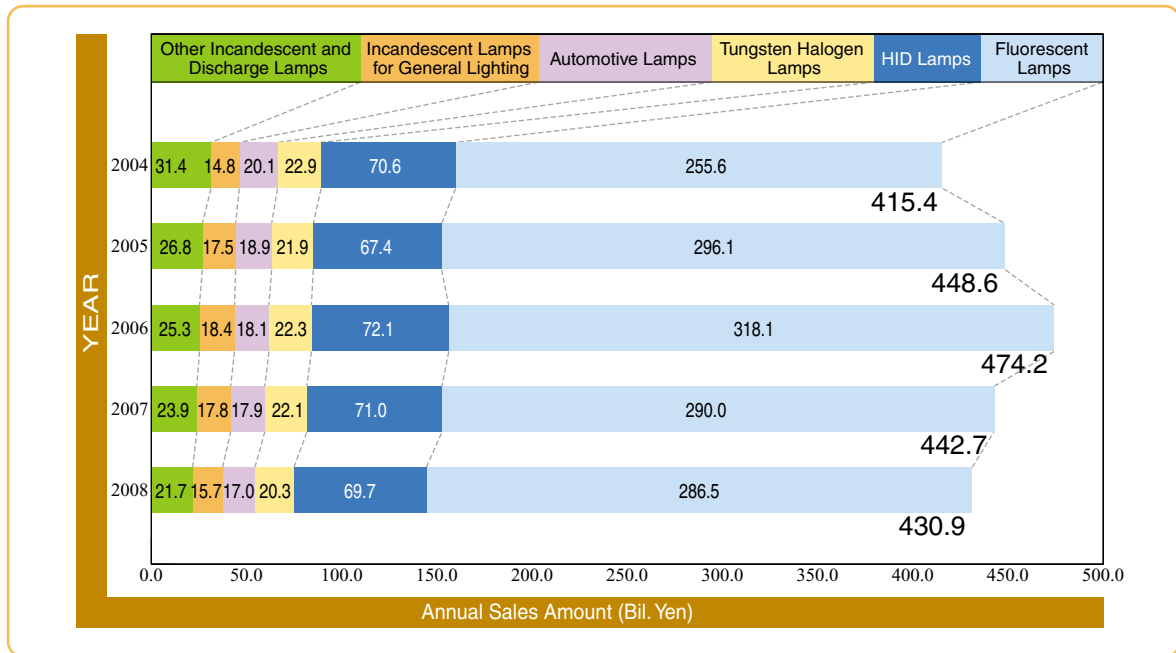
Electric Power Consumption for General Lighting (in Japan)



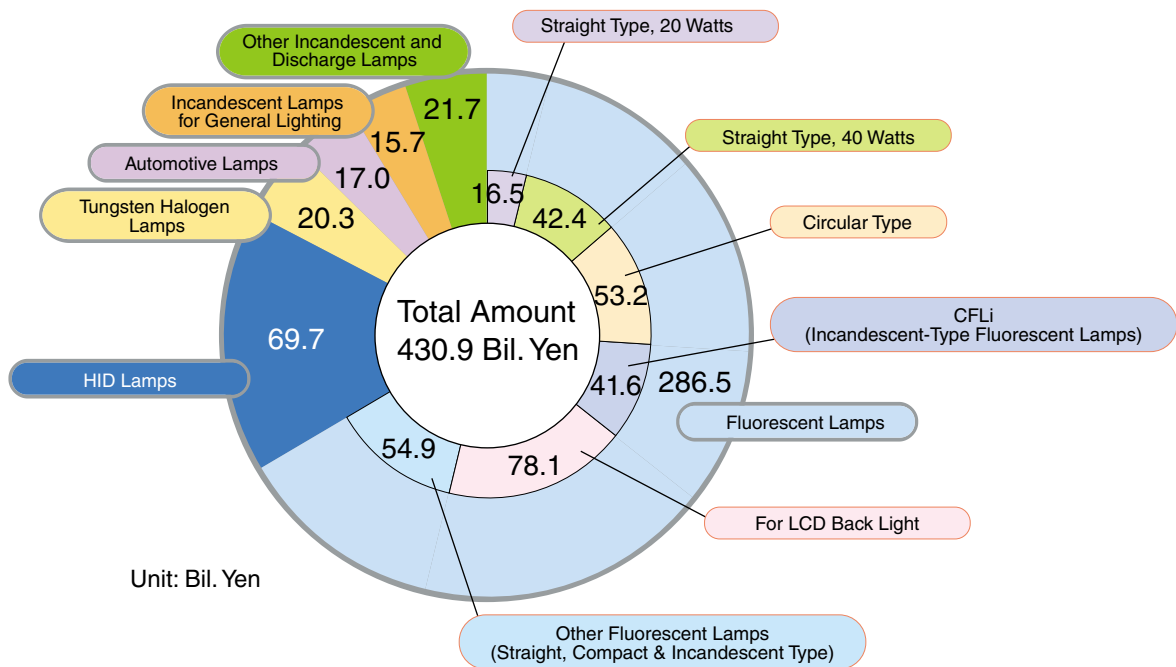
JELMA's Proposal for Energy Saving (for General Lighting)

Proposal	
1	Incandescent Lamp to CFLi (Incandescent-Type Fluorescent Lamp)
2	Tungsten Halogen Lamp to Compact Fluorescent Lamp and Ceramic Metal Halide Lamp
3	Tubular Fluorescent Lamp to Hf (High Frequency operating) - Fluorescent Lamp
4	High Pressure Mercury Lamp to Metal Halide Lamp

ANNUAL SALES AMOUNT FOR LAMPS



THE SALES AMOUNT FOR LAMPS (2008)



MARKET SCALE FOR LAMPS AND FIXTURES IN JAPAN (2008)

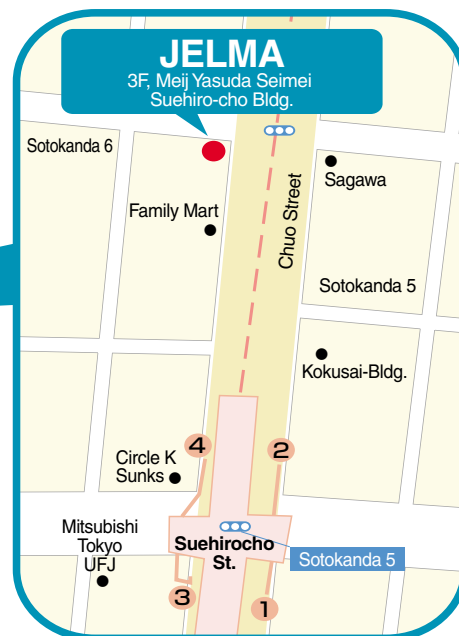
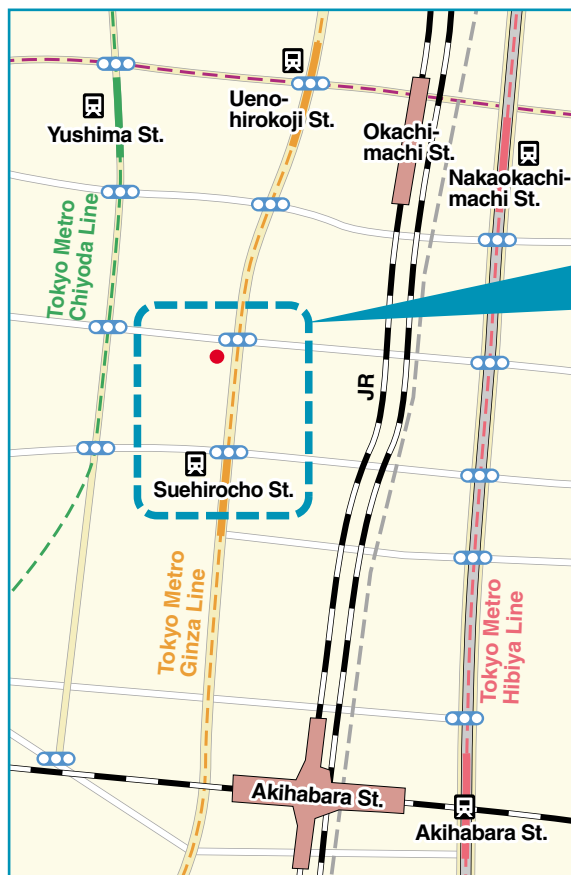
Lamps			Lighting Fixtures*		Total
431	+	484			915

* : Excepting for Motor Vehicle

JELMA HISTORY

1933.11.30	Japan Electric Lamp Industry Association Federation (JELIA) was established as a private voluntary organization.
1957.03.27	Japan Electric Lamp Manufacturers Association (JELMA) was established as an incorporated body, restructured from JELIA.
1963.10	The 30th year anniversary of JELMA was held, and The History of Japanese Electric Lamp Industry (1880s-1962) was published.
1981.10.21	The "Light Memorial Day" was set. It is originated from the day of T.Edison's Incandescent Lamp Invention.
1983.10	IEC / TC34 Working Group Meeting was held in Tokyo, and JELMA acted as the host.
1985	The 1st Tour for Hannover Messe was dispatched.
1991.05	IEC / TC34 Working Group Meeting was held in Tokyo, and JELMA acted as the host.
1995	The New Activity started to conform Japan Industrial Standard (JIS) to International Electric Committee (IEC) Standard. (The Term: 1995-2002)
1999.10	IEC / TC34 Working Group Meeting was held in Kyoto, and JELMA acted as the host.
2003.10	The 70th Anniversary of JELMA was held, and the History of Japan Electric Lamp Industry (1963-2002) was published.

GUIDE MAP



Japan Electric Lamp
Manufacturers Association

Address: 3F, Meij Yasuda Seimei Suehiro-cho Bldg.
6-15-9, Sotokanda, Chiyoda-ku, Tokyo 101-0021, Japan
Tel: +81-3-5812-1271
Fax: +81-3-5812-1272
URL: <http://www.jelma.or.jp>